

100km challenge

Help young people explore the environmental impact of different modes of transport and they could win £100!



0km

Suitable for
all sections

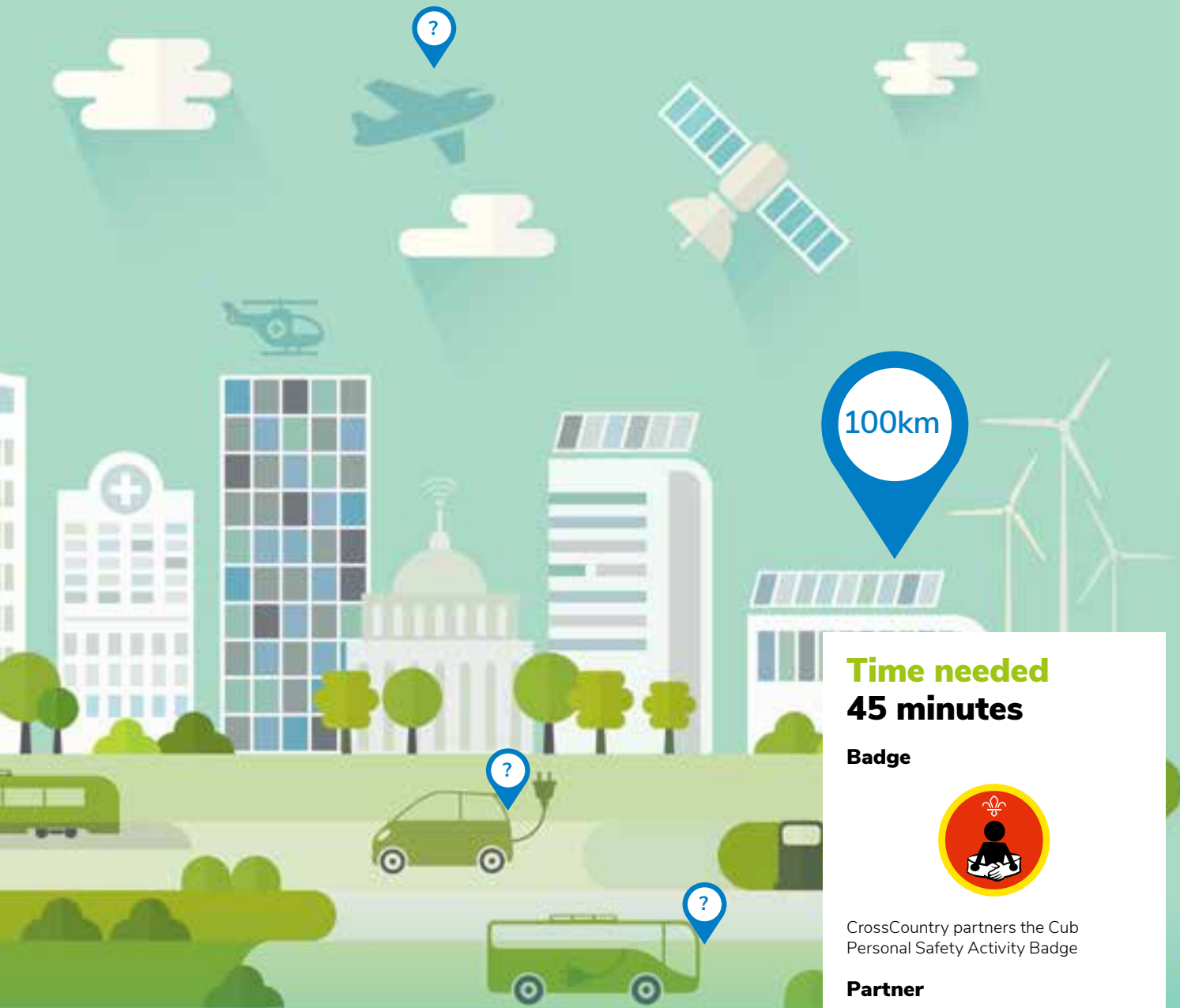
How big is your footprint?

To calculate your carbon footprint, for each type of transport you plan to use multiply the correct CO₂/km by the number of kilometres you will travel on each one. Then add these together.



Instructions

- 1 Explain to the young people that this activity will challenge them to plan a trip and work out its environmental impact.
- 2 Divide them into groups and ask how they would travel 100km from their meeting place or camp.
- 3 They must use at least two types of transport: plane, car, bus or train, from the start to the end point, and be as inventive as possible.



100km

Time needed 45 minutes

Badge



CrossCountry partners the Cub Personal Safety Activity Badge

Partner



Outcomes

Your section will learn the environmental impact of travelling, and how to reduce their own carbon footprint by choosing modes of transport that produce less pollution.

Taking it further

Ask the young people to come up with a safety code for train passengers.

More information

For more badge resources, activity sheets and safety guidance visit: scouts.org.uk/crosscountry

4 Make sure everyone discusses any potential dangers they might face, like crossing roads and their behaviour at train stations. They must identify at least one each time they change transport.

5 As a group, they should think about and discuss the potential environmental impact of travelling.

6 Once their trip is planned, help them to work out the CO₂ emissions of their journey using the figures provided on this page.

7 Bring everyone back together and see which group had the smallest impact, and how it might be reduced.

8 The 10 most inventive and environmentally-friendly journeys, as chosen by CrossCountry, will win £100 for their Group! Send your entries to: Freepost RRXU-HUEC-GLLY, 5th Floor Cannon House, 18 The Priory Queensway, Birmingham, B4 6BS by 30/08/2019. Find the terms and conditions at: scouts.org.uk/crosscountry.